

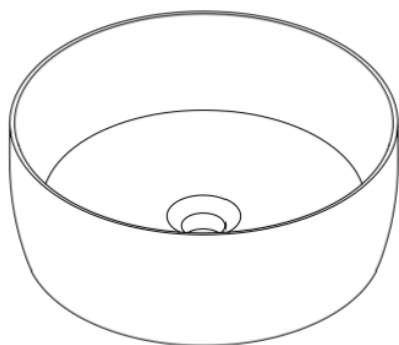
USER MANUAL



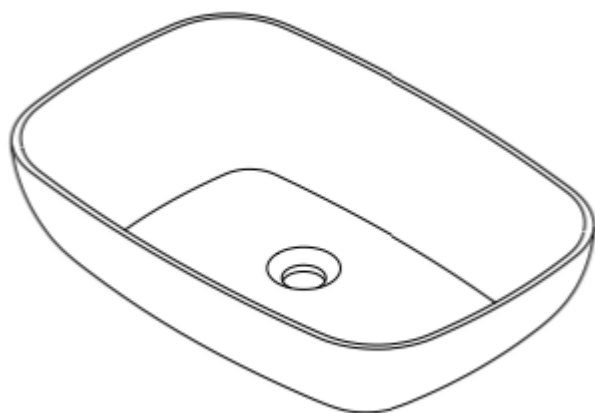
Thank you for choosing Better Bathrooms.
Please read this manual before installing your product
and keep for future reference.

**better
bathrooms**

Aurea Translucent Resin Round Countertop Basin AUREA400



Aurea Translucent Resin Round Countertop Basin AUREA600X400



- **Single-person assembly**
- **Tools required**
- **We always recommend using professional tradespeople to install your product**

V1_10.09.25

Congratulations on your purchase

And welcome to our growing gang of savvy shoppers

We're on a mission to bring you extraordinary bathroom products, for less. From modern to traditional style ceramics, plus the gorgeous fixtures, fittings and furniture to match. So, you can fall in love with your space every single day.

As one of the UK's largest independent bathroom stores, we've received countless awards; including the National Business Awards UK, the Digital Entrepreneur Awards and being placed on The Sunday Times Fast Track 100.

We hope your new product goes above and beyond your expectations. However, should any problems occur, please:

- log in to your account and contact our customer services team via your self-serve portal – betterbathrooms.com/CustomerAccount/Login
- contact us via betterbathrooms.com/content/contact-us

Important information

- Please read these instructions thoroughly and retain for future reference
- Waste pipe are not supplied.

Contents

- Component Listing
- Technical Drawing
- Tools Required
- Installation Instructions
- Maintenance, Care & Cleaning

Component Listing

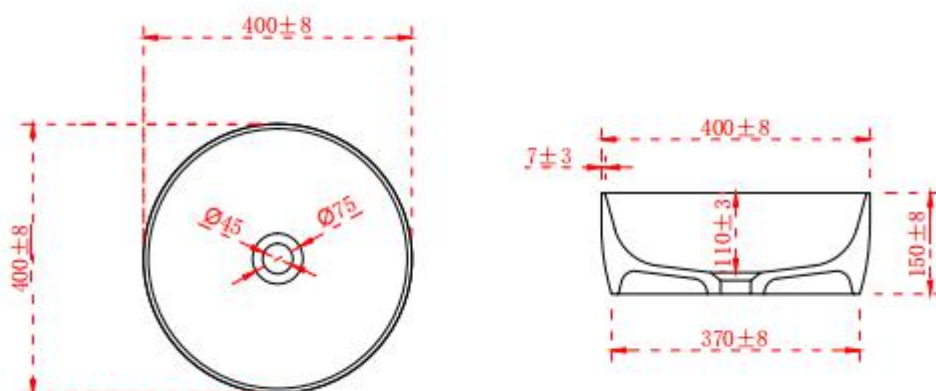
1. Basin

2.IM

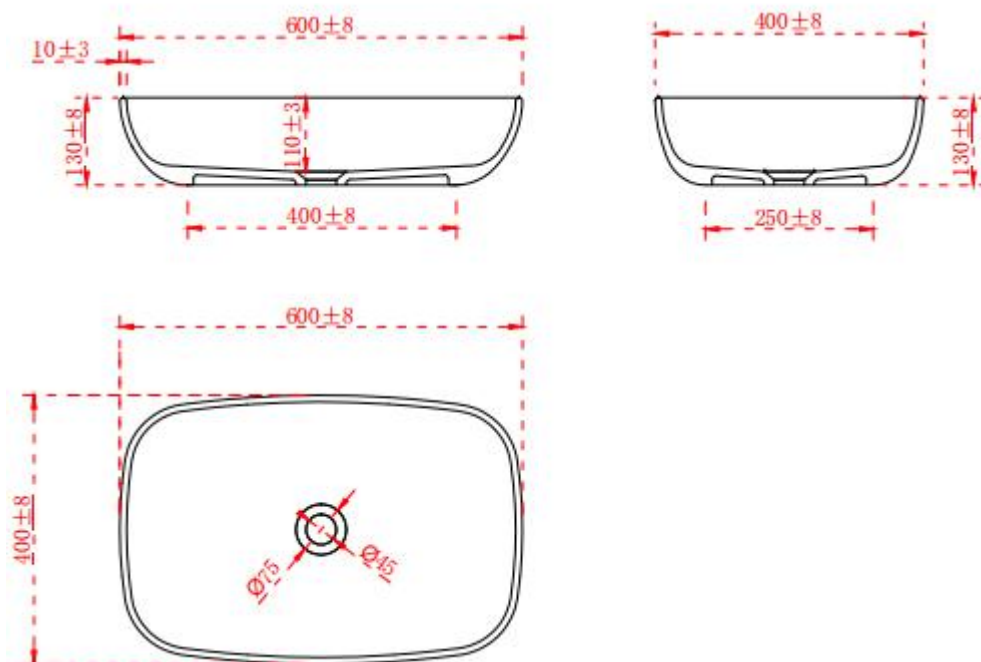
3.Waste

Technical Drawing

Aurea Translucent Resin Round Countertop Basin AUREA400



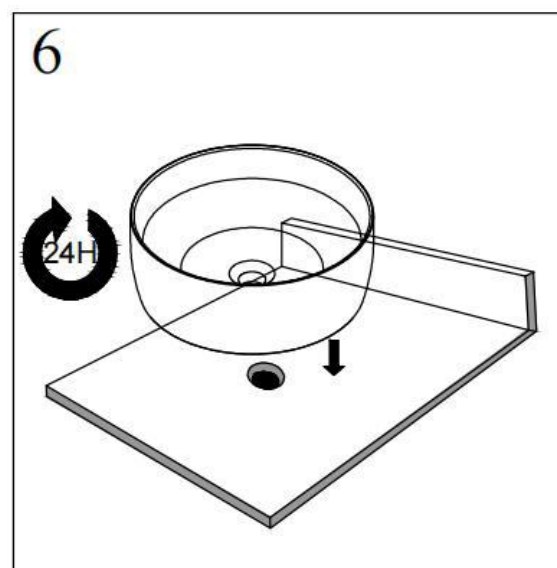
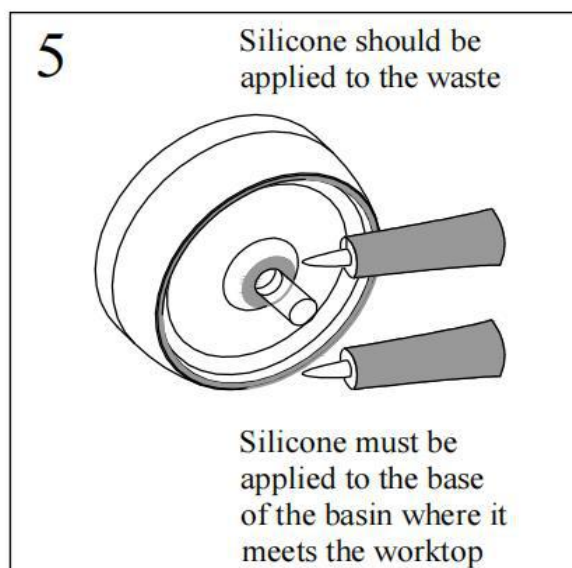
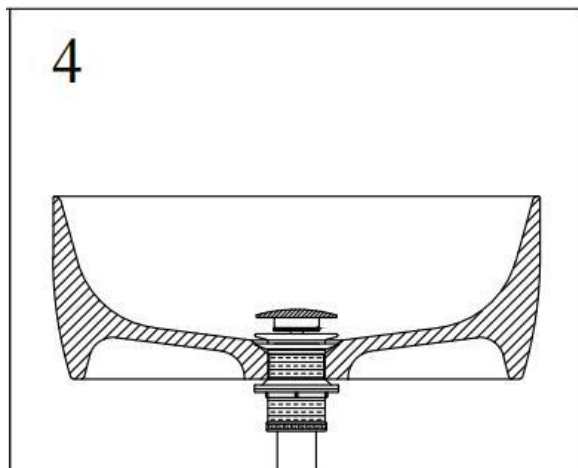
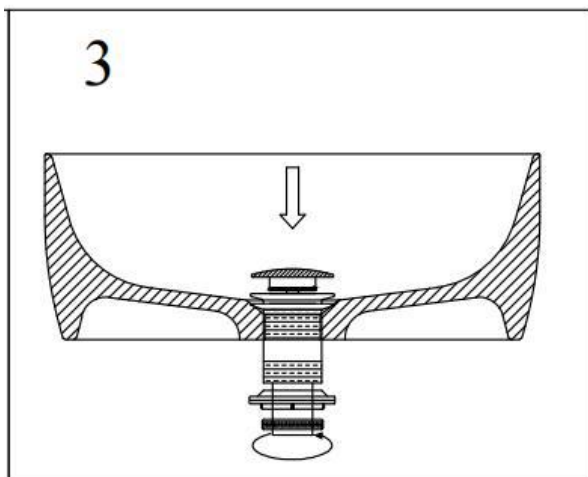
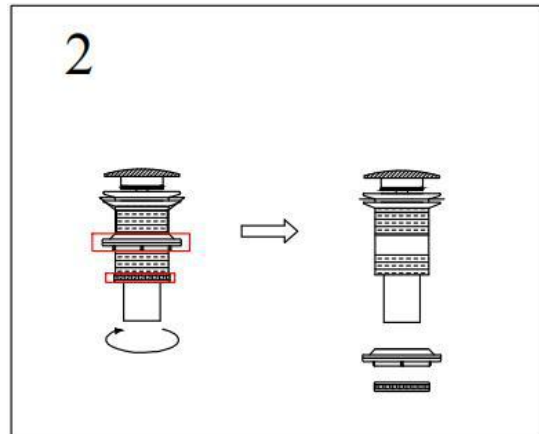
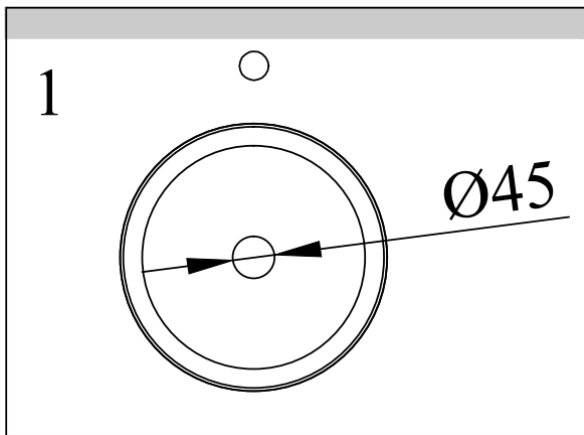
Aurea Translucent Resin Round Countertop Basin AUREA600X400



Tools Required

Silicone Adhesive

Installation Instructions



Maintenance, Care & Cleaning

1. Wipe surface with a soft cloth after each use.

To use a mild cleaning product.

For more stubborn stains, use a mildly abrasive cream cleanser.

3. Stubborn Stains, Scratches, and Damaged Surfaces

To repair/remove stubborn stains, scratches, smudges, and scuffs:

1) Use water to remove dirt and dust from the surface.

2) Use 1500 grit sandpaper and sand lightly with water in small circular motions.

3) Follow with 2000 grit sandpaper (finer-grit) sanding lightly in small circular motions until smooth.

4) Dry with a towel and apply polishing wax to the surface and rub it with a towel until it becomes shiny.

Care Instructions

Wipe surface with a soft cloth after each use.

To use a mild cleaning product.

For more stubborn stains, use a mildly abrasive cream cleanser.

For more information

- visit betterbathrooms.com
- email customerservices@buyitdirect.co.uk
- call 0330 390 3062
- write to Trident Business Park, Neptune Way, Huddersfield, HD2 1UA

**better
bathrooms** 

Part of the BuyItDirect Group